

SPSS: Bar chart (via Legacy Dialogs)

This document will explain how to generate a bar-chart using SPSS as shown below.

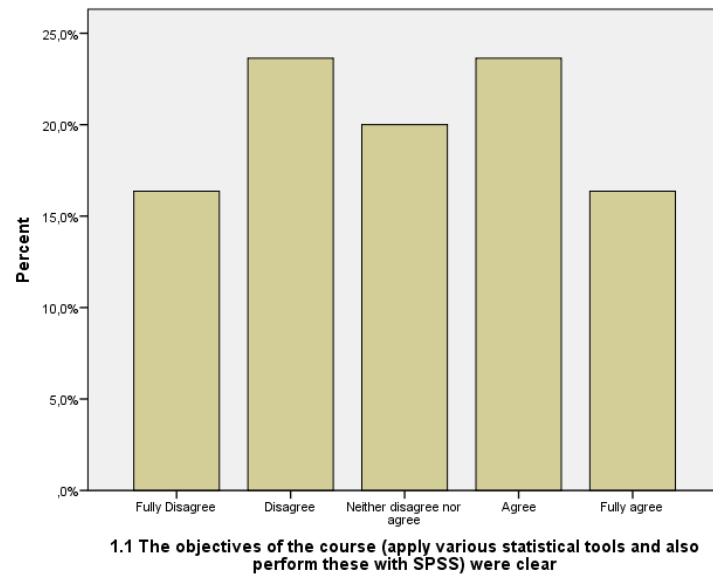


Figure 1. Example bar-chart generated with SPSS

The described steps are also shown in the Youtube video at: <https://youtu.be/U4p3cQpunQw>.

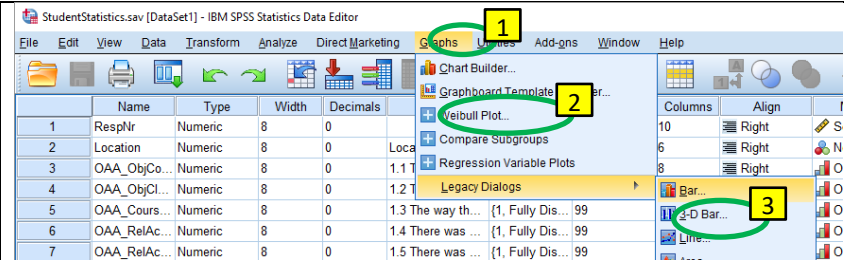
The example file used is *StudentStatistics.sav* available on the companion website <http://PeterStatistics.com>.

Bar chart

1. Click in the menubar on **Graphs**

2. Click on **Legacy Dialogs**

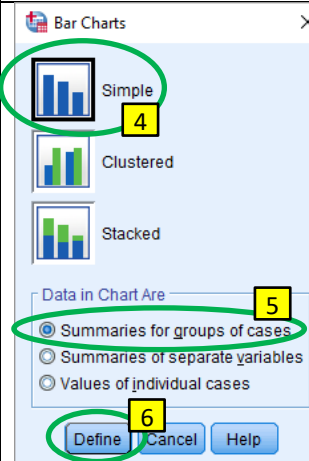
3. Click on **Bar...**



4. Click on **Simple**


5. Check if **Summaries for groups of cases** is selected

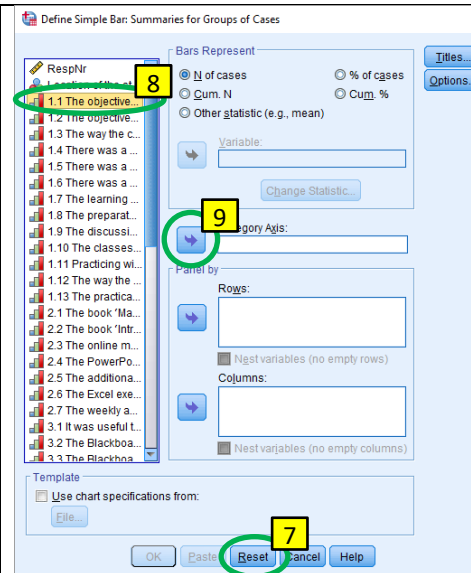
6. Click on **Define**



7. Click on 

8. Click on the variable of which you want a pie-chart

9. Click on  to move it to the *Category Axis*



10. Choose at Bars Represent if you want to see the frequency (*N of cases*), the Cumulative frequency (*Cum. N*), the percentages (*% of cases*), or the cumulative percent (*Cum. %*).

11. Click on 